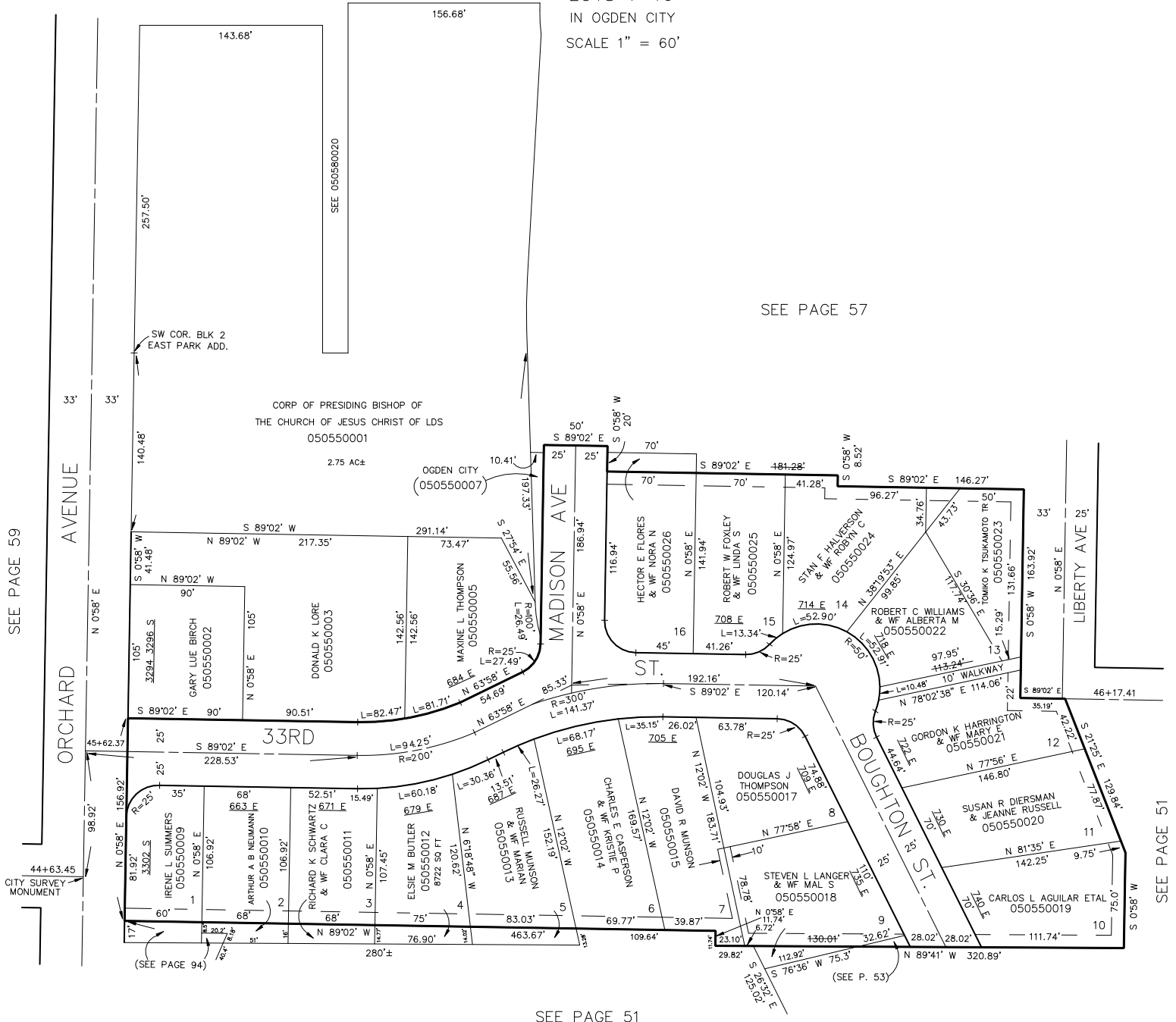


LANGFORD SUBDIVISION

TAXING UNIT: 25

LOTS 1-16
IN OGDEN CITY
SCALE 1" = 60'

SEE PAGE 57



10' UTILITY & DRAINAGE EASEMENTS EACH
SIDE OF PROPERTY LINES AS INDICATED
BY DASHED LINES EXCEPT AS OTHERWISE
SHOWN.

FOR COMPLETE ENG DATA SEE
ORIGINAL DEDICATION PLAT IN
BOOK 11, PAGE 15 OF RECORDS.

SEE PAGE 59

SEE PAGE 51

SEE PAGE 51